

88HP Series - Hermetically Sealed Plug-in Relays

DPDT, 3PDT, 10 Amp

The 88HP series relay is a 2 or 3 pole, hermetically sealed, metal can relay. Relays are completely sealed to prevent any contamination from entering. Cases are painted gray to protect them from corrosion.

GENERAL SPECIFICATIONS (@ 25° C)

Contacts:

Contact Configuration	Up To 3PDT
Contact Material	Silver Alloy, Gold Flashed
Contact Rating	
Maximum Allowable Contact Load	10A @ 240VAC/28VDC
Contact Resistance, Initial	50 milliohms max @ 6VDC

Coil:

Coils Available	AC and DC
Nominal Coil Power	3VA 1.5W
Input Voltage Tolerance - AC	85% to 110% of nominal
Input Voltage Tolerance - DC	80% to 110% of nominal
Drop out voltage	10% of nominal
Duty	Continuous

Timing:

Operate Time (max)	25mS
Release Time (max)	20mS

Dielectric Strength:

Across Open Contacts	1000 VRMS
Between Mutally Insulated Points	1250 VRMS
Insulation Resistance	1000 megohms @ 500VAC

Temperature:

Operating	-10 to 60°C (14 to 140°F)
Storage	-30 to 105°C (-22 to 221°F)

Life Expectancy:

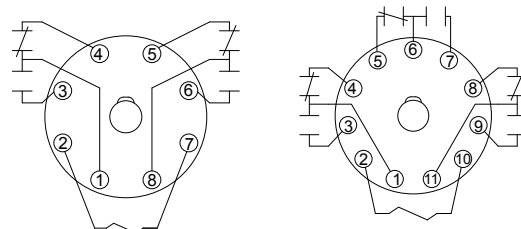
Electrical (full load operations)	100,000
Mechanical (no load operations)	5,000,000

Miscellaneous:

Shock	20 G's 11mS, 1/2 Sine Wave
Vibration	5 G's 10Hz to 55Hz
Mounting Position	Any
Enclosure	Hermetically Sealed Metal Case
Weight	5.0oz (142 grams)



88HP Wire Diagram



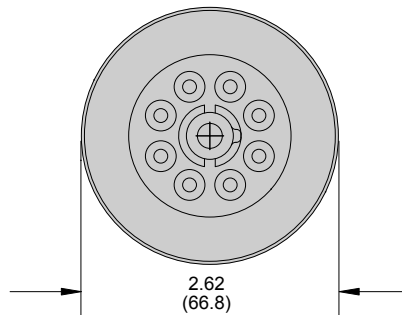
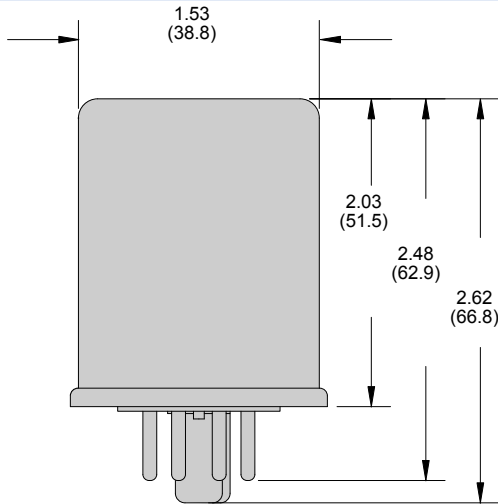
DPDT

3PDT

Special Purpose Relays

Outline Dimensions

Dimensions Shown in inches & (millimeters)



88HP Part Number Chart

Part numbers	Contact configuration	Number of pins octal style	Nominal input voltage	Nominal resistance (ohms)	Nominal power (VA)
VAC Operated					
88AHPX-24	DPDT	8 pin	120VAC	-	3.0
88AHPX-36	3PDT	11 pin	120VAC	-	3.0
VDC Operated					
88HPX-33	DPDT	8 pin	12VDC	100	1.5
88HPX-34	DPDT	8 pin	24VDC	400	1.5